

## SCHEDULE OF PLANT MATERIAL

CODE	BOTANICAL NAME	COMMON NAME	QUANTITY	MATURE HEIGHT	CONTAINER SIZE	STAKES
APs	<i>Acer palmatum</i> 'Senkaki'	Coral Barked Maple	7	5m	75 litre	2
ASm	<i>Acmena smithii</i> 'Minor'	Dwarf Lilli Pilli	6	3m	200mm	-
DRlr	<i>Dianella revoluta</i> 'Little Rev'	Flax Lily	38	0.3m	140mm	-
DA	<i>Dicksonia antarctica</i>	Soft Tree Fern	3	3m	1m trunk	-
LFs	<i>Lomandra fluviatilis</i> 'Shara'	Shara Lomandra	30	0.4m	140mm	-
LJr	<i>Liriope</i> 'Just Right'	Tuft Lily	135	0.4m	140mm	-
NDGs	<i>Nandina domestica</i> 'Gulf Stream'	Dwarf Sacred bamboo	12	0.6m	200mm	-
PTbb	<i>Phormium tenax</i> 'Bronze Baby'	Dwarf NZ Flax	7	1m	200mm	-
RI	<i>Rhaphiolepis indica</i>	Indian Hawthorn	22	1.5m	300mm	-
SAP	<i>Syzygium australe</i> 'Pinnacle'	Dwarf Lilli Pilli	11	3m	300mm	-
TL	<i>Tristaniopsis laurina</i> 'Luscious'	Water Gum	1	7m	75 litre	2
VH	<i>Viola hederacea</i>	Native Violet	26	0.1m	140mm	-

## SCHEDULE OF EXISTING TREES

KEY	BOTANICAL NAME	COMMON NAME	HEIGHT X SPREAD
1.	<i>Eucalyptus scoparia</i>	Wallangarra White Gum	17 x 8m
2.	<i>Eucalyptus microcorys</i>	Tallow wood	20 x 14m
3.	<i>Liquidambar styraciflua</i>	Liquidambar	16 x 10m
4.	<i>Podocarpus</i> sp	-	6 x 10m

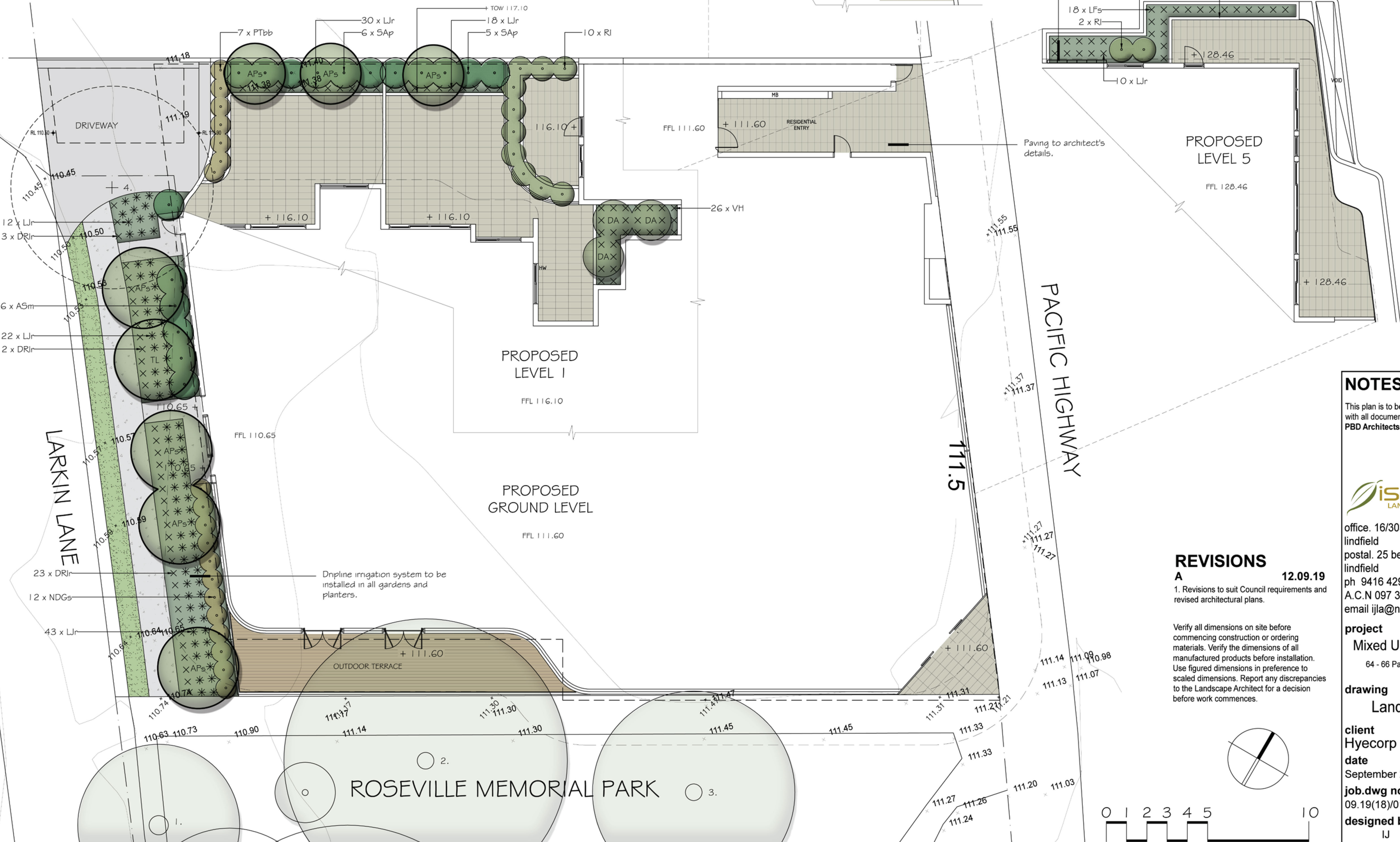
NOTE: Also refer to Tree Impact Assessment prepared by Margot Blues, Margot Blues Consulting Arborist for Trees No.1-4.

## BASIX CALCULATIONS

ZONE	AREA
<b>COMMON AREAS</b>	
Lawn	23.02m <sup>2</sup>
Garden Areas	63.60m <sup>2</sup>
Indigenous/Low Water Use Planting	0.00m <sup>2</sup> (0.00%)
<b>PRIVATE GARDEN AREAS</b>	
<b>Unit 101</b>	
Indigenous/Low Water Use Planting	17.66m <sup>2</sup>
	0.00m <sup>2</sup> (0.00%)
<b>Unit 102</b>	
Indigenous/Low Water Use Planting	15.36m <sup>2</sup>
	0.00m <sup>2</sup> (0.00%)
<b>Unit 108</b>	
Indigenous/Low Water Use Planting	7.53m <sup>2</sup>
	0.00m <sup>2</sup> (0.00%)
<b>Unit 406</b>	
Indigenous/Low Water Use Planting	12.26m <sup>2</sup>
	0.00m <sup>2</sup> (0.00%)
<b>Unit 503</b>	
Indigenous/Low Water Use Planting	13.38m <sup>2</sup>
	0.00m <sup>2</sup> (0.00%)

## LEGEND

- + 55.28 EXISTING LEVELS
- EXISTING TREES TO BE RETAINED
- EXISTING TREES TO BE REMOVED
- UNIT PAVING. REFER TO ARCHITECTS DETAILS.
- OUTDOOR TERRACE. REFER TO ARCHITECTS DETAILS.
- NEW TURF AREAS: SOFT LEAF BUFFALO



## NOTES

This plan is to be read in conjunction with all documentation prepared by PBD Architects.



office. 16/303 pacific highway  
lindfield nsw 2070  
postal. 25 bent street  
lindfield nsw 2070  
ph 9416 4290 fax 9416 4735  
A.C.N 097 328 580  
email ija@netspace.net.au

## project

Mixed Use Development  
64 - 66 Pacific Highway, Roseville

## drawing

Landscape Plan

## client

Hyecorp Property Group

## date

September 2019

## job.dwg no.

09.19(18)/014'A'

## designed by

IJ

## scale

1:100 @ A1

1:200 @ A3

## no. in set

ONE/TWO

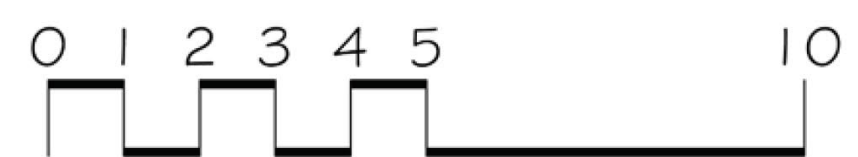
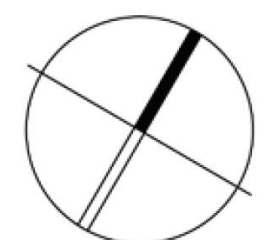
## drawn by

AM/HL

## REVISIONS

**A** 12.09.19  
1. Revisions to suit Council requirements and revised architectural plans.

Verify all dimensions on site before commencing construction or ordering materials. Verify the dimensions of all manufactured products before installation. Use figured dimensions in preference to scaled dimensions. Report any discrepancies to the Landscape Architect for a decision before work commences.

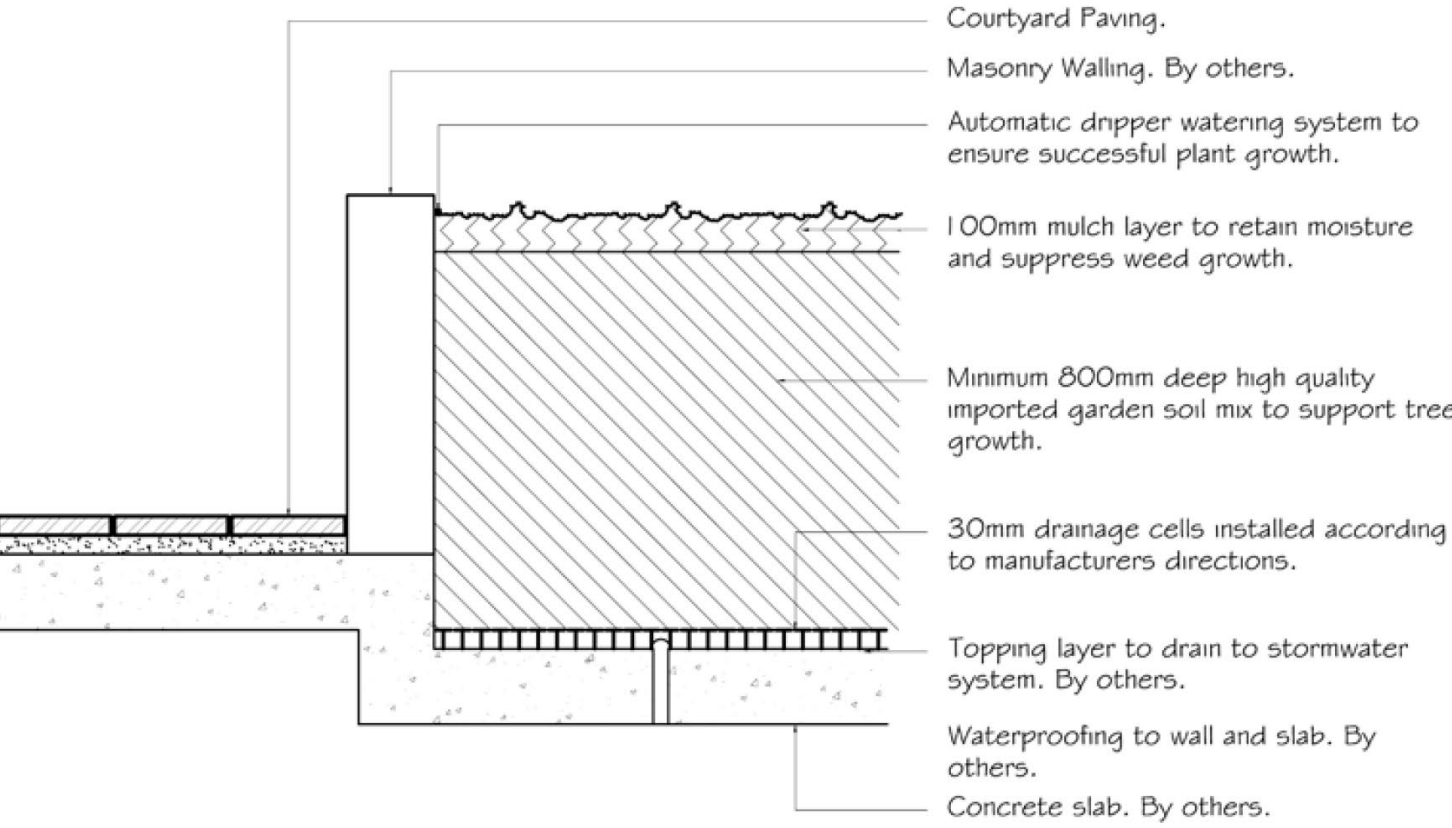




GREENWALL SCHEDULE OF PLANT MATERIAL

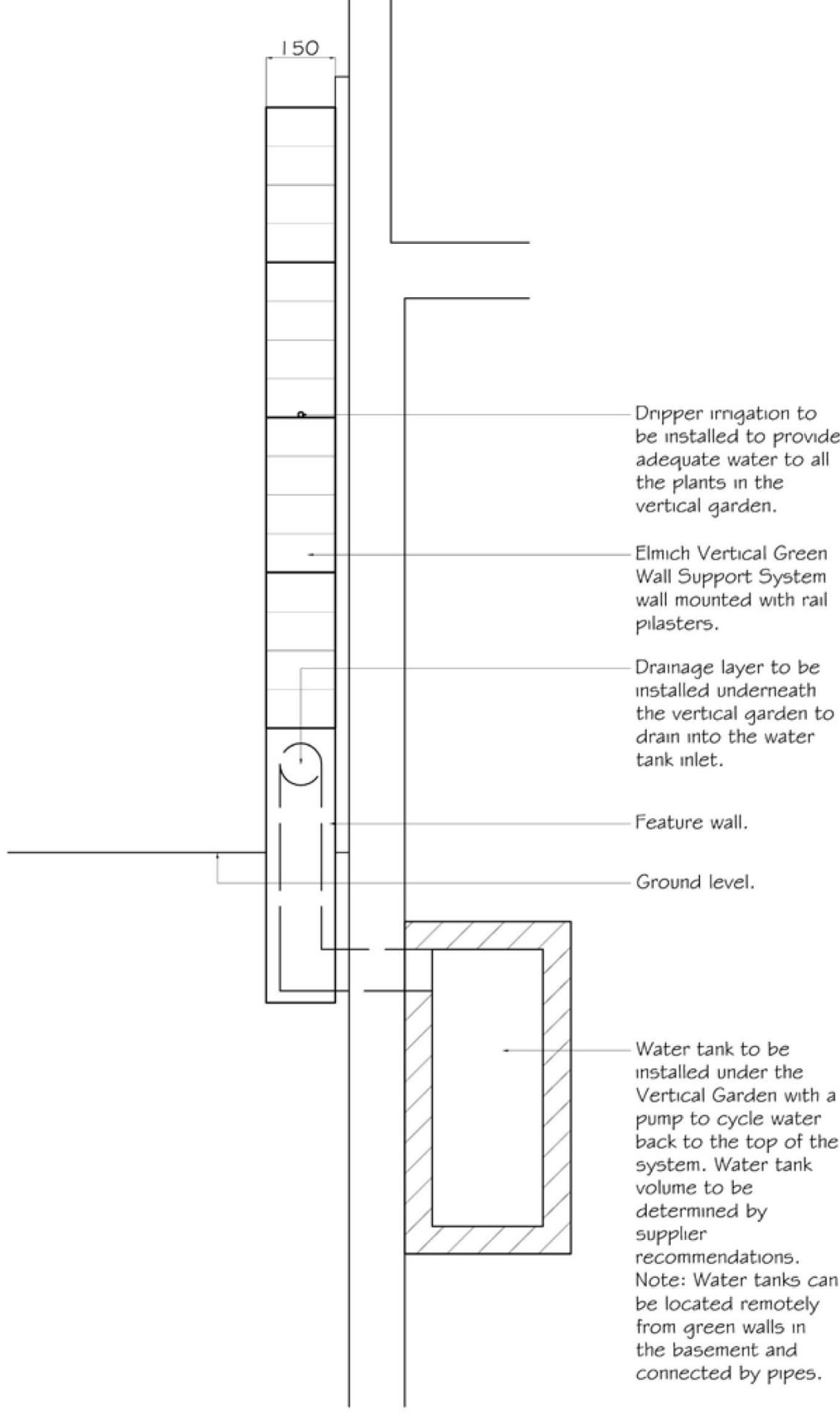
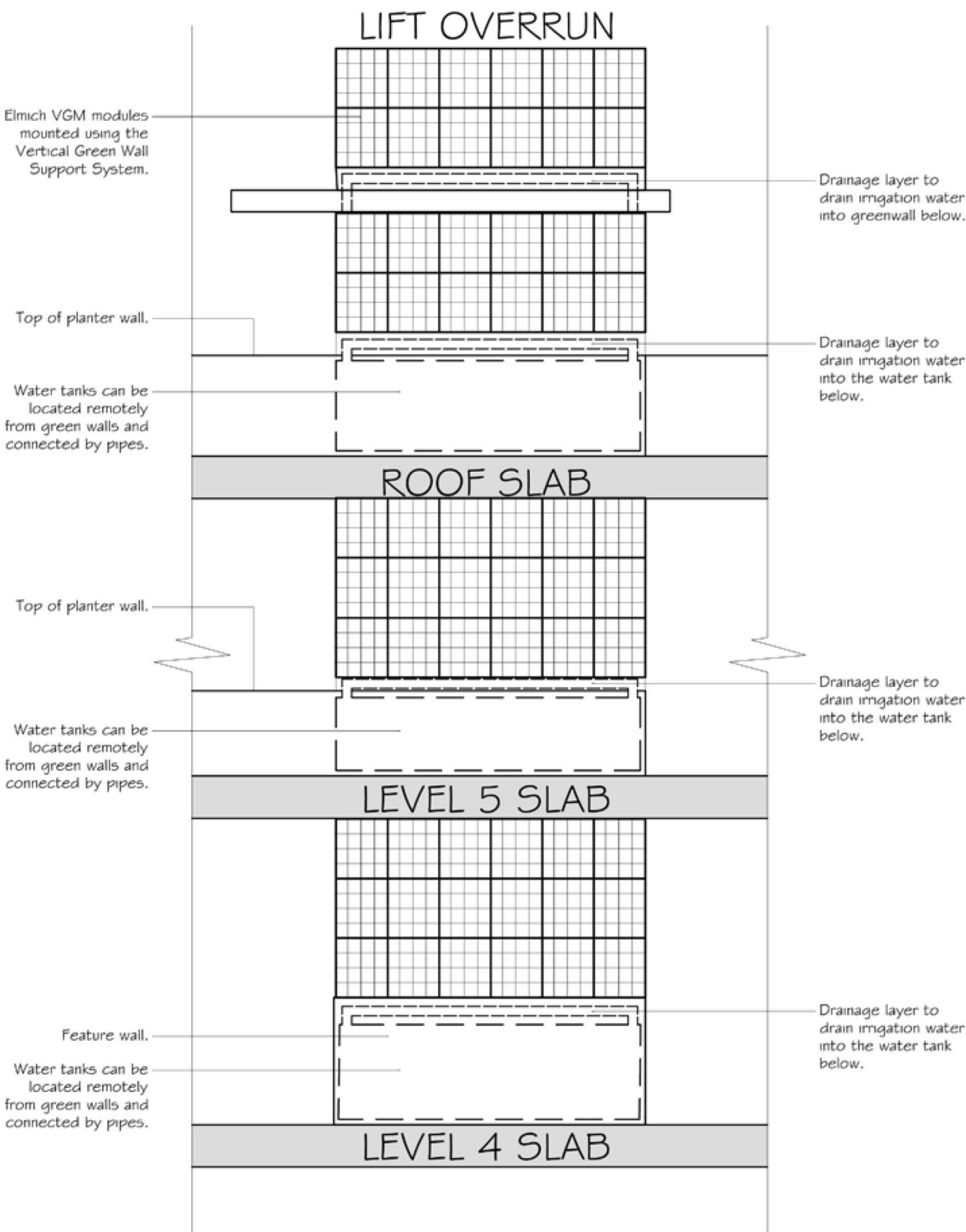
CODE	BOTANICAL NAME	COMMON NAME	QUANTITY	MATURE HEIGHT	CONTAINER SIZE	STAKES
AE	Aspidistra elata*	Cast Iron Plant	36	0.5m	Tubestock	-
AN	Asplenium nidus*	Birds Nest Fern	36	0.75m	Tubestock	-
BC	Blechnum cartilagineum*	Gristle Fern	36	0.5m	Tubestock	-
BSs	Blechnum 'Silver Star'	Silver Star	36	0.5m	Tubestock	-
DC	Dianella caerulea	Paroo Lily	84	0.4m	Tubestock	-
DSs	Dianella 'Silver Streak'	Silver Streak Dianella	84	0.4m	Tubestock	-
HV	Hardenbergia violacea	Native Sarsparilla	84	prostrate	Tubestock	-
HS	Hibbertia scandens	Guinea Flower	84	0.4m	Tubestock	-
LM	Liriope muscari	Turf Lily	84	0.4m	Tubestock	-
LLc	Lomandra 'Little Con'	Lomandra	84	0.4m	Tubestock	-
OJ	Ophiopogon japonicus	Mondo Grass	84	0.2m	Tubestock	-
PP	Pandorea pandorana	Wonga Wonga Vine	84	prostrate	Tubestock	-
PX	Philodendron 'Xanadu'	Dwarf Philodendron	36	0.5m	Tubestock	-
PA	Plectranthus argentatus*	Silver Spurflower	36	0.5m	Tubestock	-
PC	Plectranthus ciliatus*	Speckled Spurflower	36	0.4m	Tubestock	-
VH	Viola hederacea *	Native Violet	36	0.1m	Tubestock	-

\* indicates plants to be planted in level 4 greenwall only



1 PLANTER BOX  
SCALE 1:20  
TYPICAL SECTION.

2 GREENWALL  
SCALE 1:50  
TYPICAL ELEVATION.

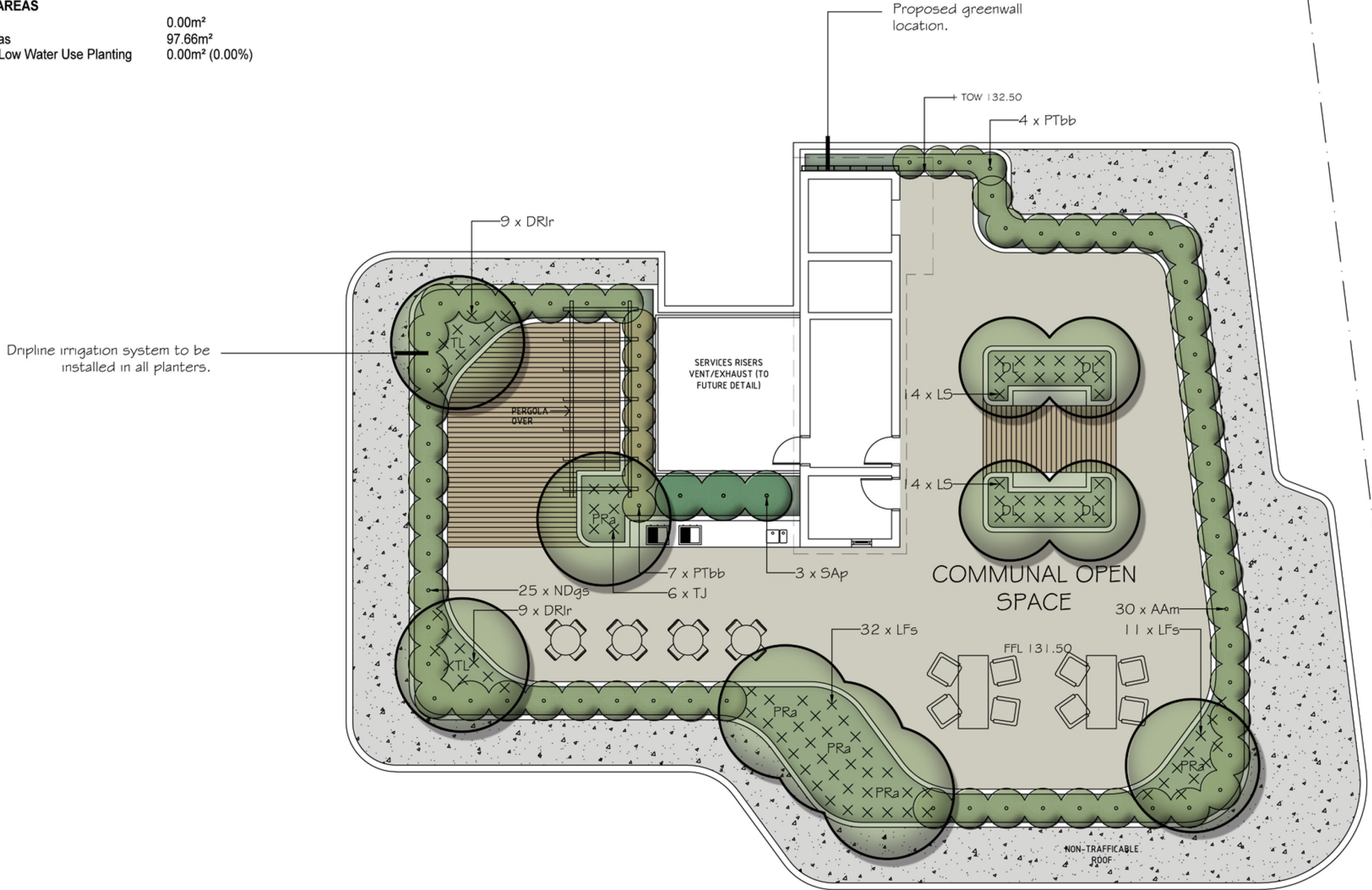


LEGEND

- + 55.08 EXISTING LEVELS
- NON TRAFFICABLE ROOF. REFER TO ARCHITECTS DETAILS.

BASIX CALCULATIONS  
ZONE AREA

COMMON AREAS	
Lawn	0.00m²
Garden Areas	97.66m²
Indigenous/Low Water Use Planting	0.00m² (0.00%)



3 VERTICAL GARDEN  
SCALE 1:20  
TYPICAL SECTION.

All species specified are to be planted at random in the 1 G plant slots in each Elmich VGM module to create an overall mosaic of planting. Modules are to be planted horizontally at a nursery and gradually move into a vertical position to train the plants before installation on site.

4 VGM MODULE  
SCALE 1:20  
TYPICAL ELEVATION.

ROOFTOP SCHEDULE OF PLANT MATERIAL

CODE	BOTANICAL NAME	COMMON NAME	QUANTITY	MATURE HEIGHT	CONTAINER SIZE	STAKES
AAm	Acmena 'Allyn Magic'	Dwarf Lilli Pilli	30	1m	300mm	-
DL	Dypsis lutescens	Golden Cane Palm	4	3m	45 litre	-
DRlr	Dianella revoluta 'Little Rev'	Flax Lily	18	0.3m	140mm	-
LFs	Lomandra fluviatilis 'Shara'	Shara Lomandra	43	0.4m	140mm	-
LS	Lomandra 'Seascape'	Seascape Lomandra	28	0.4m	140mm	-
NDgs	Nandina 'Gulf Stream'	Sacred Bamboo	25	1m	200mm	-
PRa	Plumeria rubra var. acutifolia	Frangipani	5	4m	75 litre	2
PTbb	Phormium tenax 'Bronze Baby'	Dwarf NZ Flax	11	1m	200mm	-
SAp	Syzygium australe 'Pinnacle'	Dwarf Lilli Pilli	3	3m	300mm	-
TL	Tristanopsis laurina 'Luscious'	Water Gum	2	7m	75 litre	2
TJ	Trachelospermum jasminoides	Star Jasmine	6	0.4m	140mm	-

REVISIONS

- A 12.09.19  
1. Revisions to suit Council requirements and revised architectural plans.

Verify all dimensions on site before commencing construction or ordering materials. Verify the dimensions of all manufactured products before installation. Use figured dimensions in preference to scaled dimensions. Report any discrepancies to the Landscape Architect for a decision before work commences.

NOTES

This plan is to be read in conjunction with all documentation prepared by PBD Architects.



office. 16/303 pacific highway  
lindfield nsw 2070  
postal. 25 bent street  
lindfield nsw 2070  
ph 9416 4290 fax 9416 4735  
A.C.N 097 328 580  
email ija@netspace.net.au

project  
Mixed Use Development  
64 - 66 Pacific Highway, Roseville

drawing  
Roof Terrace Plan

client  
Hyecorp Property Group  
date  
September 2019  
job.dwg no.  
09.19(18)/015'A'  
designed by  
IJ  
scale  
1:100 @ A1  
1:200 @ A3  
no. in set  
TWO/TWO  
drawn by  
AM/HL

